

# KETCO Property Services



**Working for you**

**Contact Us: 0208 590 5413 or email us on [Ketco@Ketco.co.uk](mailto:Ketco@Ketco.co.uk)**

# *About us*



**Ketco Property service is a well established company, with an excellent reputation for delivering services that exceeds our customers' expectation.**

**We call this our EXCEL approach. We offer a large range of specialised services designed to meet our customer's needs.**

**Our focus is that our customers are key partners in the delivery of all our works and we positively engage with them throughout.**

# ***Our Team***

**Ketco Property Services works with a diverse range of qualified tradesmen with experience in undertaking a variety of building and refurbishment projects.**



**We provide excellent support to our customers by regularly reporting on progress and exceeding quality and service expectations.**

**Contact Us: 0208 590 5413 or email us on [Ketco@Ketco.co.uk](mailto:Ketco@Ketco.co.uk)**

# ***Our Services***

**Ketco Property Service provides a range of services to the social housing, commercial and private sectors.**



**Our high quality services ensures that we are a first point of call. We will respond and undertake repairs which may include small scale building works, clearing rubbish, cleaning and securing property.**

**We focus on voids; working hard to ensure properties are back to lettable standards within the shortest possible time. Our fast track Excel service ensures a maximum of 15 days turnaround.**

**Contact Us: 0208 590 5413 or email us on [Ketco@Ketco.co.uk](mailto:Ketco@Ketco.co.uk)**

# ***Our Services***

- **Property Management**
- **Refurbishments & Regeneration**
- **Planned maintenance**
- **EXCEL Turnaround Service:**
  - **small building works**
  - **cleaning**
  - **garden maintenance**
  - **security**
  - **clearance & waste removal**
  - **mould eradication**
  - **pest control**
  - **sharps removal**
  - **graffiti removal**
  - **Fencing**
  - **Rubbish clearance**
- **Plumbing & Heating Installation**
- **Painting and Decorating**
- **Electrical & Mechanical works**



# ***Refurbishments and Turnaround Services***

***We are specialists in property refurbishments and turnaround. We are able to transform run down void properties into fantastic, modern liveable properties in the shortest possible turnaround time – we call this our EXCEL .T. INDEX which is a mark of our promise to keep the void period down to a minimum of 3 days - maximum of 15 days without compromising standards.***



***Our comprehensive service includes minor repairs, cleaning, clearing gardens to bring the property back to clean, safe and secure condition that is attractive and lettable to prospective tenants.***

before

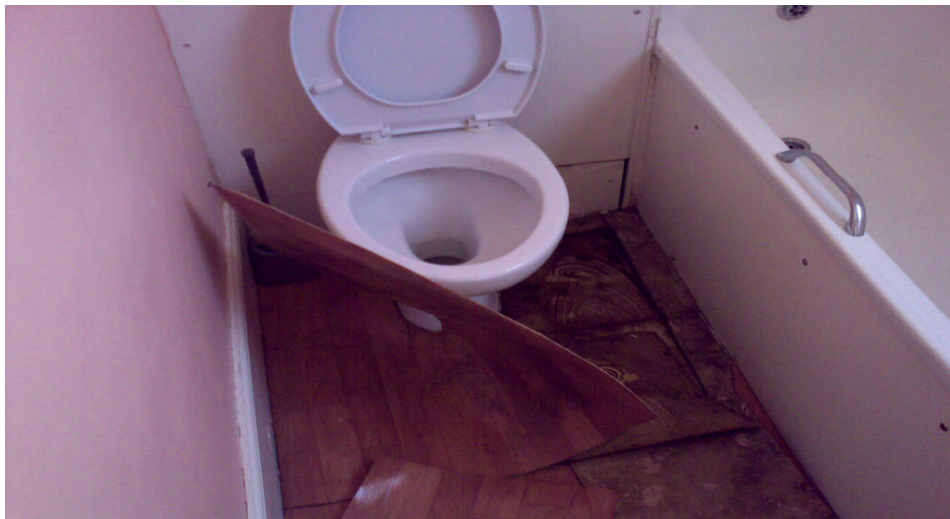
after



**Contact Us: 0208 590 5413 or email us on [Ketco@Ketco.co.uk](mailto:Ketco@Ketco.co.uk)**

# ***Refurbishment and Turnaround Services***

***We will help you to reduce rent loss by ensuring that vacant property is brought up to a lettable standard within a quick turnaround time of 3-15 days so that new customers can move in to homes which are clean, attractive and free from defects.***



***Our aim is to assist you by providing a fast track bespoke repair service which deals with peaks or backlogs of vacant properties in need of repairs which by default are losing revenue from rent.***



**Contact Us: 0208 590 5413 or email us on [Ketco@Ketco.co.uk](mailto:Ketco@Ketco.co.uk)**

# ***EXCEL Turnaround***

## ***Cleaning***

***We have a fast and professional void cleaning and end of tenancy cleaning services which can be delivered immediately the schedule of work is approved and completed within a 3 days timeline.***

***This service is focussed on helping landlords reduce the downtime of their void properties and helping to speed up the process of re-letting.***

## ***Mould Eradication***

***We offer a specialist mould eradication service. We will undertake a diagnostic survey to identify any eradication treatment work to be carried out and provide a written estimate for the work needed.***

## ***Sharps Removal***

***In a property, where sharps for e.g. needles are identified, they will be removed through a managed process which ensures safe removal from the property, in-line with our sharps policy.***

# ***EXCEL Turnaround***

## ***Graffiti Removal***

***We provide a swift and efficient service for graffiti removal. We can also treat the wall with anti-graffiti protection to reduce the likely reoccurrence.***

## ***Clearance and Waste Removal***

***As part of our voids repair service; we also provide a range of additional services which include garden clearance and maintenance.***

## ***Security***

***We fully understand how vacant properties can be illegally occupied when void and we offer a range of effective security solutions to protect property assets. Our service includes an initial risk assessment to ascertain the security requirements, subsequently followed by a written quotation for services which will be provided to the client.***

# ***Building Services***

We undertake small scale building work and provide building services including:

## ***Electrical Services***

We undertake all electrical work, which ranges from lighting, switches, security systems, etc. all work is carried out professionally in line with by one of our fully NICEIC requirements.

## ***Glasswork & Glazing Services***

*We undertake all types of glasswork and double glazing contracts. We also have the capabilities of installing glass doors and blocks.*

## ***Plumbing & Gas Services***

We undertake all plumbing including, designing new systems, and maintenance to existing systems.

# ***Building Services***

## ***Painting & Decorating Services***

***We provide all types of preparation, decoration and specialist finishes including marbling and gilding (gold leafing).***

## ***Plastering Services***

**Plastering work is carried out by our experienced tradesmen which are able to carry out plastering, from sand and cement rendering, all the way through to finishing skim.**

## ***Carpentry Services***

**We employ professional carpenters who can carry out a wide variety of tasks, such as joinery (doors and door frames, skirting, wooden stair cases), wooden roofing, joist work, etc).**

## ***Bricklaying***

**We deliver excellent quality workmanship not just with bricks but also stonework, glass block work and also flint work.**



6 Wangey Road  
Chadwell Heath  
Romford  
Essex RM6 4DB

Contact Us: 0208 590 5413 or email us on [Ketco@Ketco.co.uk](mailto:Ketco@Ketco.co.uk)